

Aprilia Caponord ETV1000 (Rally-Raid) Engine and sump protection bar mount CAD plans

02/02/2015 ©moto-abruzzo



These PDF files were drawn from measurements taken from my own Rally-Raid, I cannot guarantee the dimensional accuracy or fit of individual parts or assemblies.

6 5 4 3 2 1

D

D

C

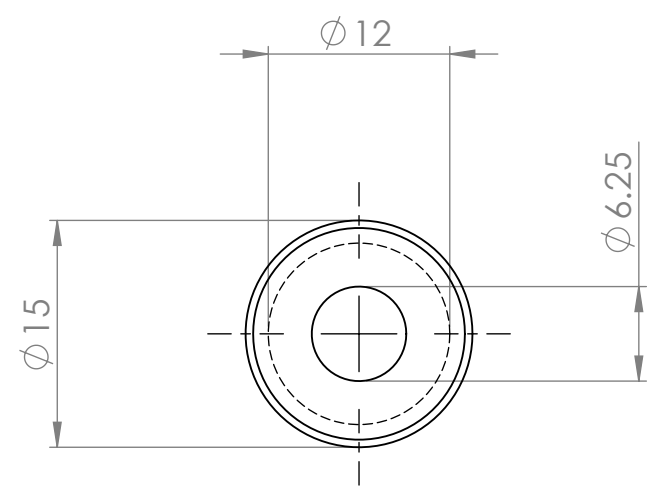
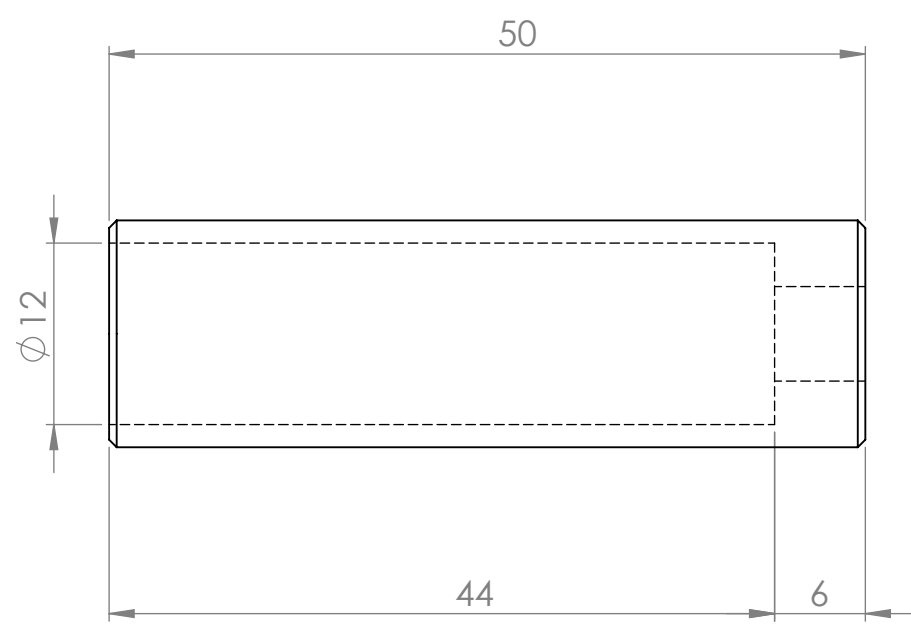
C

B

B

A

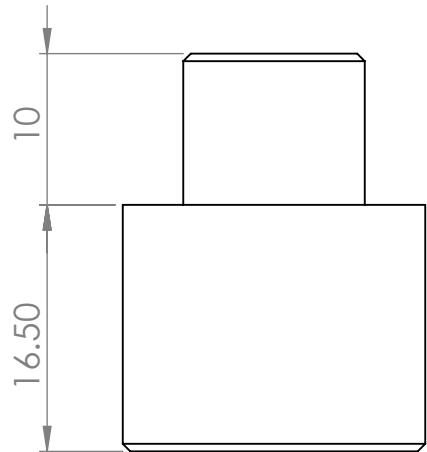
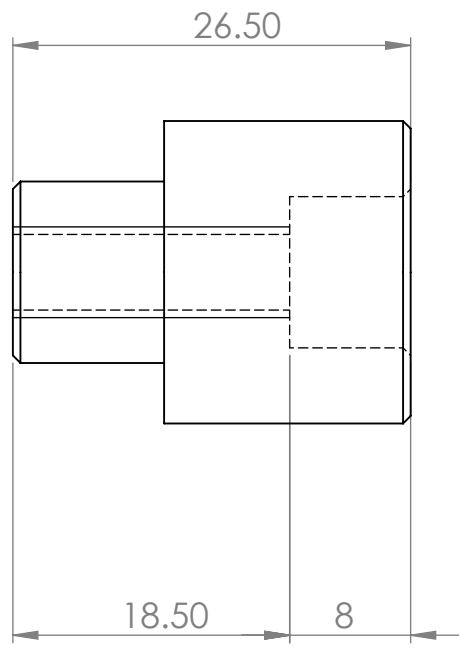
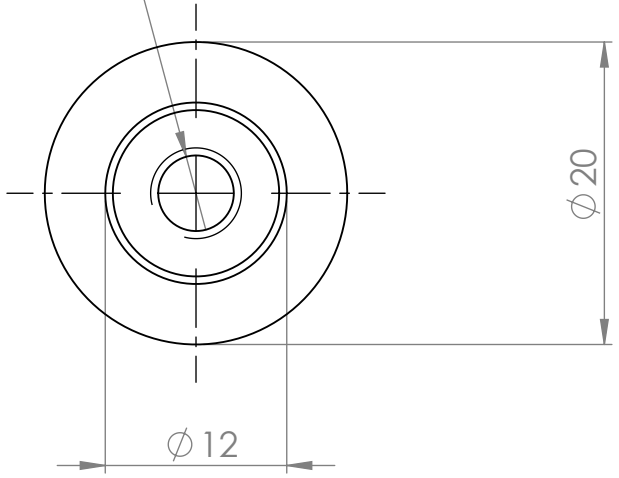
A



UNLESS OTHERWISE SPECIFIED: DIMENSIONS ARE IN MILLIMETERS SURFACE FINISH: TOLERANCES: LINEAR: ANGULAR:				FINISH: Black powder coat		DEBURR AND BREAK SHARP EDGES		DO NOT SCALE DRAWING		REVISION 1.0	
								©Moto-Abruzzo 2014			
								TITLE: Left hand bracket (1) FWD mount for ETV1000			
DRAWN Karl Bianchini				SIGNATURE		DATE 17/12/14		MATERIAL: Mild Steel		DWG NO. BRAC1-2	
CHK'D										A4	
APPV'D											
MFG											
Q.A											
								WEIGHT:		SCALE:2:1	
										SHEET 2 OF 12	

6 5 4 3 2 1

Ø 5 THRU ALL
M6 - 6H THRU ALL

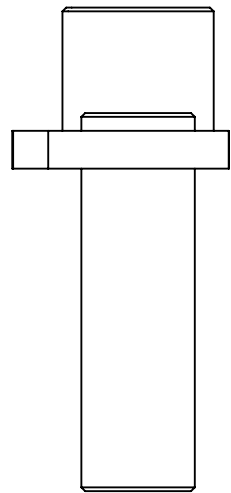
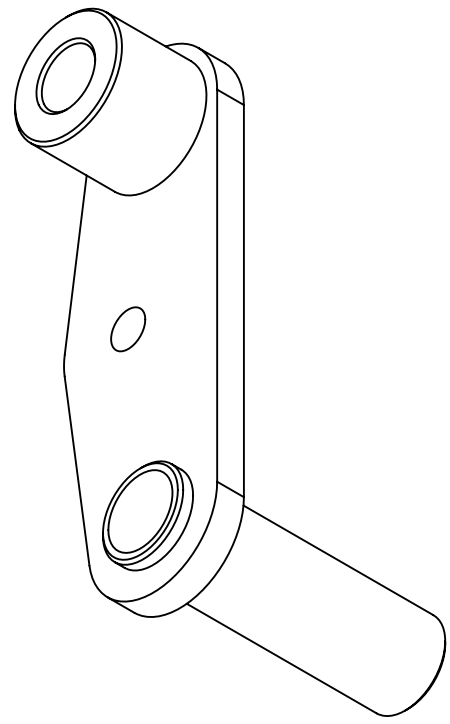
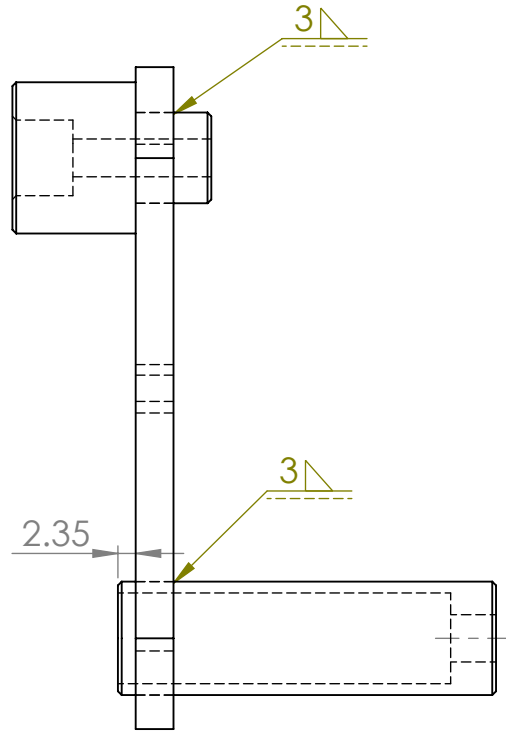
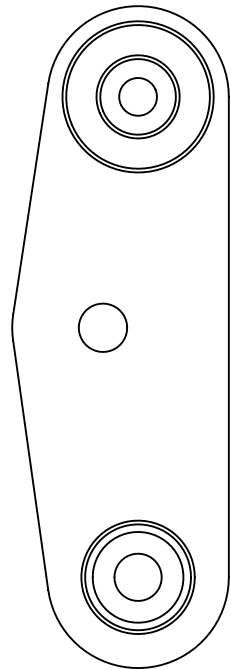


UNLESS OTHERWISE SPECIFIED: DIMENSIONS ARE IN MILLIMETERS SURFACE FINISH: TOLERANCES: LINEAR: ANGULAR:			FINISH: Black powder coat		DEBURR AND BREAK SHARP EDGES	DO NOT SCALE DRAWING		REVISION 1.0		
						©Moto-Abruzzo 2014				
						TITLE: Left hand bracket (1) rear mount for ETV1000				
						MATERIAL: Mild Steel		DWG NO. BRAC1-3		A4
						WEIGHT:		SCALE:2:1		SHEET 3 OF 12

	NAME	SIGNATURE	DATE		
DRAWN	Karl Bianchini		17/12/14		
CHK'D					
APPV'D					
MFG					
Q.A					

TITLE: Left hand bracket (1) rear mount for ETV1000	
DWG NO. BRAC1-3	A4
SCALE:2:1	SHEET 3 OF 12

6 5 4 3 2 1



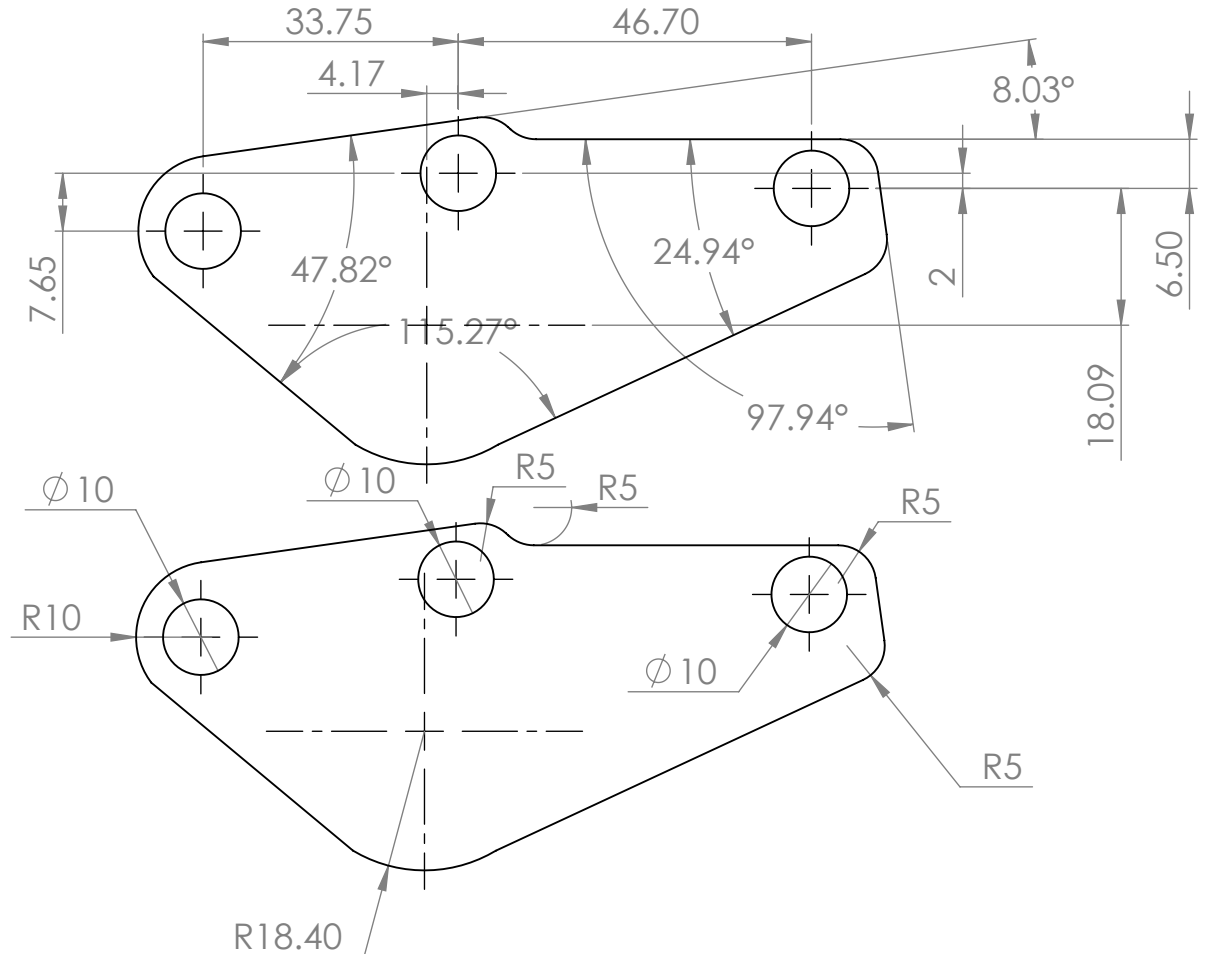
VIEW
SCALE 1 : 1

UNLESS OTHERWISE SPECIFIED: DIMENSIONS ARE IN MILLIMETERS SURFACE FINISH: TOLERANCES: LINEAR: ANGULAR:			FINISH: Black powder coat		DEBURR AND BREAK SHARP EDGES	DO NOT SCALE DRAWING		REVISION 1.0	
						©Moto-Abruzzo 2014			
						TITLE: Left hand bracket (1) for ETV1000 - complete			
						MATERIAL: Mild Steel		DWG NO. BRAC1COMP	
						WEIGHT:		SCALE:1	
						SHEET 4 OF 12			

D
C
B
A

D
C
B
A

6 5 4 3 2 1

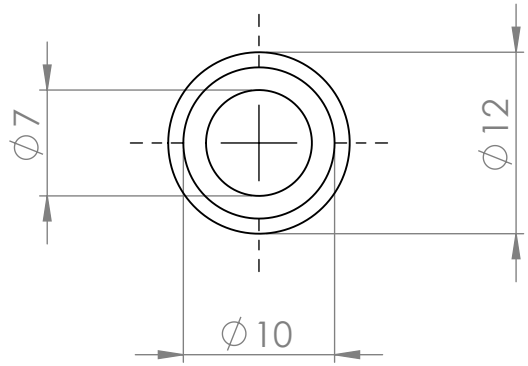
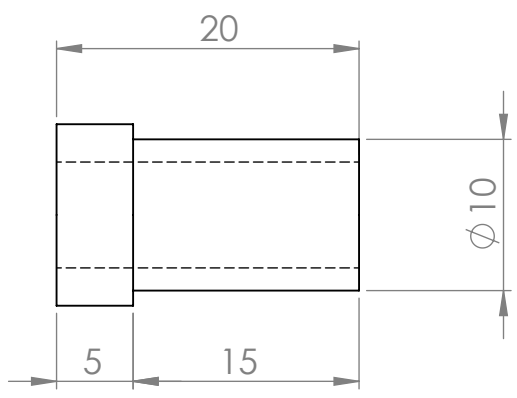


UNLESS OTHERWISE SPECIFIED: DIMENSIONS ARE IN MILLIMETERS SURFACE FINISH: TOLERANCES: LINEAR: ANGULAR:				FINISH: Black powder coat		DEBURR AND BREAK SHARP EDGES		DO NOT SCALE DRAWING		REVISION 1.0	
								©Moto-Abruzzo 2014			
								TITLE: Left hand bracket (2) for ETV1000 engine protection bars			
DRAWN Karl Bianchini						SIGNATURE		DATE 17/12/14		MATERIAL: Mild Steel	
CHK'D						MFG		DWG NO. BRAC2-1		A4	
APPVD						Q.A		WEIGHT:		SCALE:1:1	
										SHEET 5 OF 12	

6 5 4 3 2 1

D

D

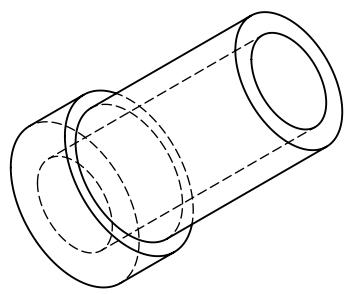


C

C

B

B



A

A

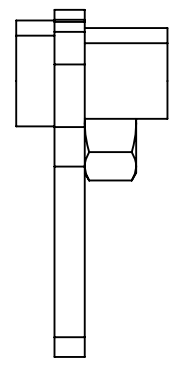
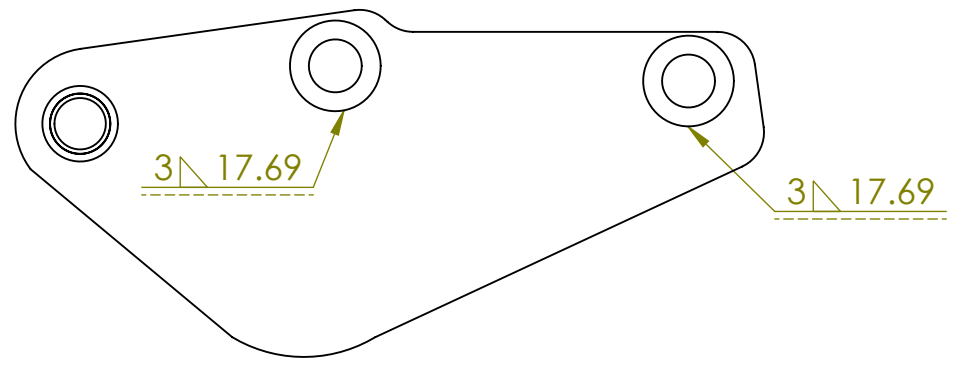
6 5 4 3 2 1

UNLESS OTHERWISE SPECIFIED: DIMENSIONS ARE IN MILLIMETERS SURFACE FINISH: TOLERANCES: LINEAR: ANGULAR:			FINISH: Black powder coat		DEBURR AND BREAK SHARP EDGES		DO NOT SCALE DRAWING		REVISION 1.0		
							©Moto-Abruzzo 2014				
							TITLE: Left hand bracket (2) engine mount for ETV1000				
DRAWN Karl Bianchini			SIGNATURE		DATE 17/12/14		DWG NO.		BRAC2-2		A4
CHK'D							MATERIAL:		Mild Steel		
APPV'D							WEIGHT:		SCALE:2:1		SHEET 6 OF 12
MFG											
Q.A											

6 5 4 3 2 1

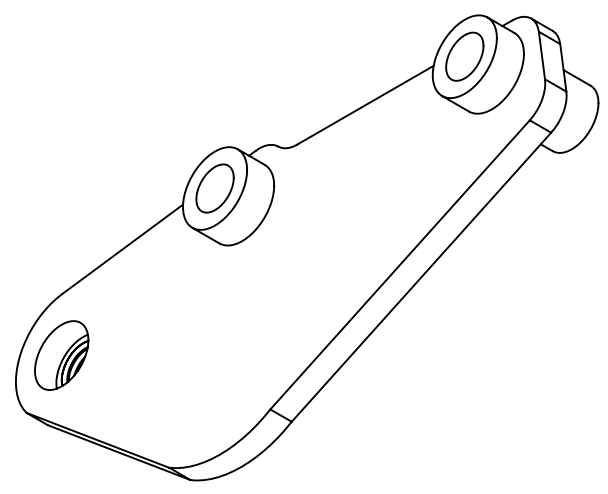
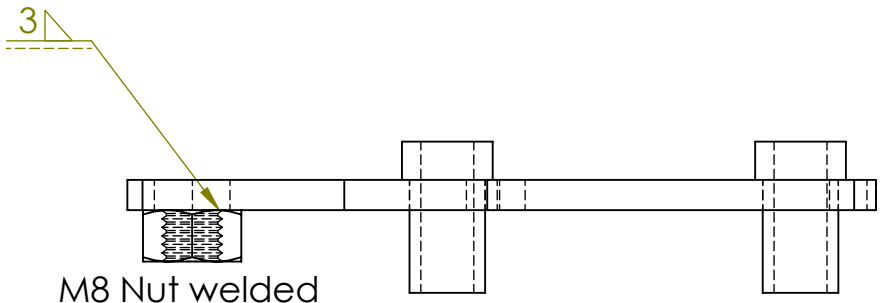
D

D



C

C



B

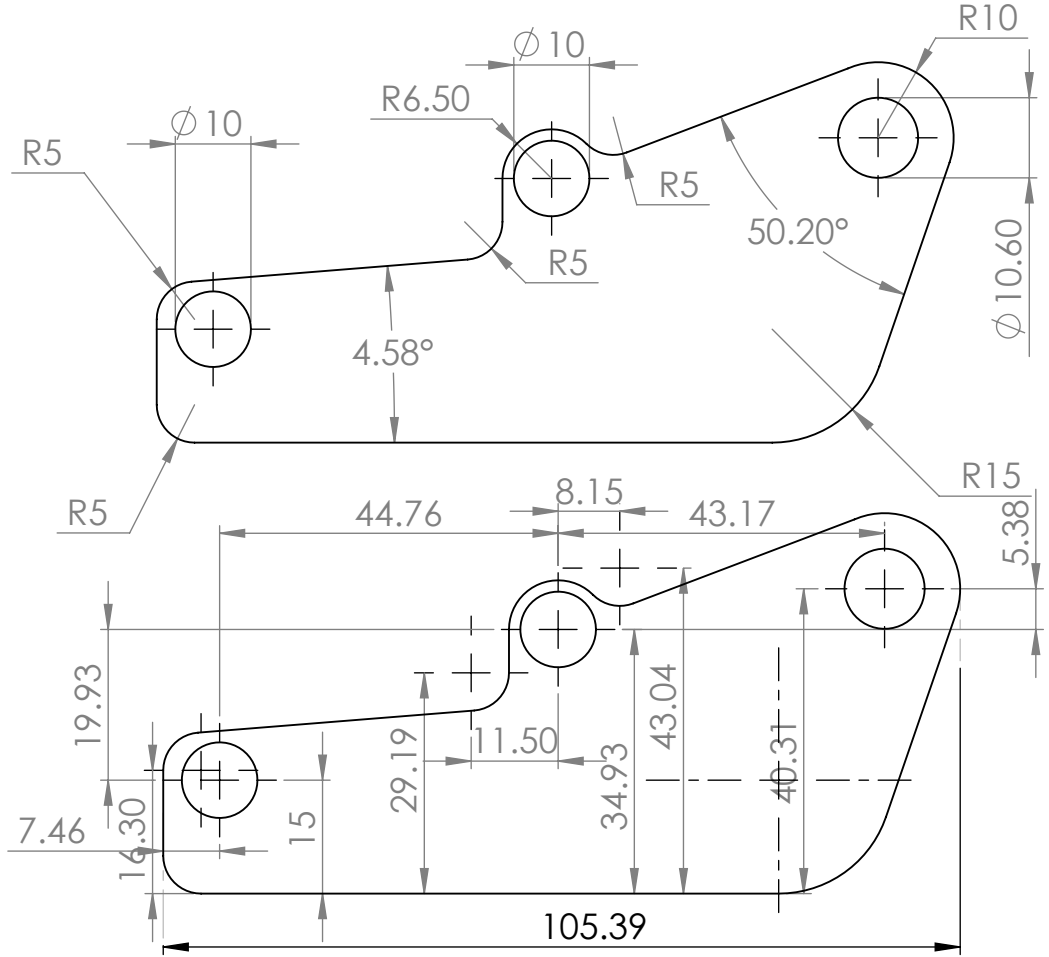
B

A

A

UNLESS OTHERWISE SPECIFIED: DIMENSIONS ARE IN MILLIMETERS SURFACE FINISH: TOLERANCES: LINEAR: ANGULAR:			FINISH: Black powder coat		DEBURR AND BREAK SHARP EDGES		DO NOT SCALE DRAWING		REVISION 1.0			
							©Moto-Abruzzo 2014					
							TITLE: Left hand bracket (2) for ETV1000 - complete					
							MATERIAL: Mild Steel			DWG NO. BRAC2COMP		A4
							WEIGHT:			SCALE:1:1		SHEET 7 OF 12

6 5 4 3 2 1



UNLESS OTHERWISE SPECIFIED: DIMENSIONS ARE IN MILLIMETERS SURFACE FINISH: TOLERANCES: LINEAR: ANGULAR:				FINISH: Black powder coat		DEBURR AND BREAK SHARP EDGES		DO NOT SCALE DRAWING		REVISION 1.0	
								©Moto-Abruzzo 2015			
DRAWN Karl Bianchini						DATE 02/01/2015					
CHK'D											
APPV'D											
MFG											
Q.A						MATERIAL: Mild steel					
						TITLE: Right hand bracket (3) for ETV1000 engine protection bars					
						DWG NO. BRAC3-1					
						WEIGHT:					
						SCALE:1:1				SHEET 8 OF 12	

D

D

C

C

B

B

A

A

6

5

4

3

2

1

6

5

4

3

2

1

6 5 4 3 2 1

D

D

C

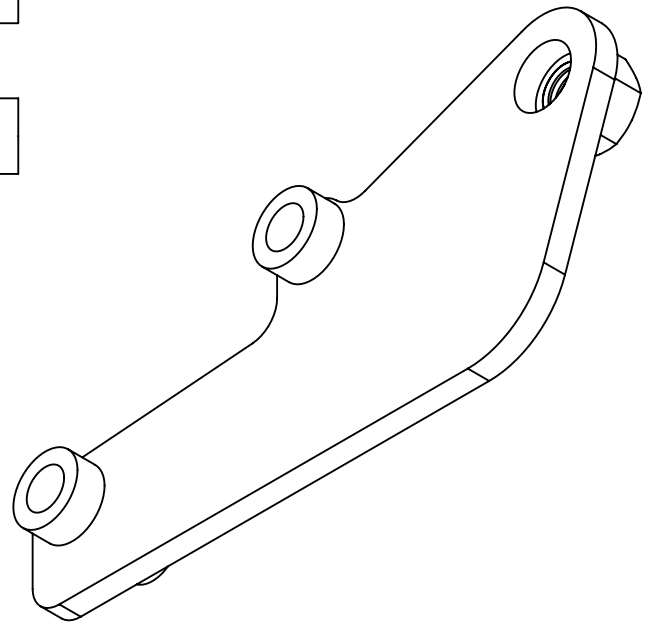
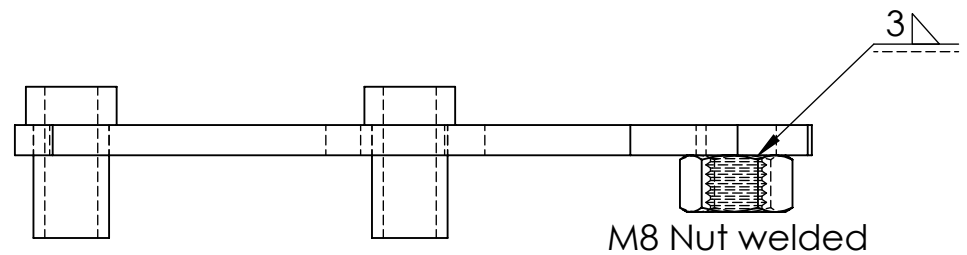
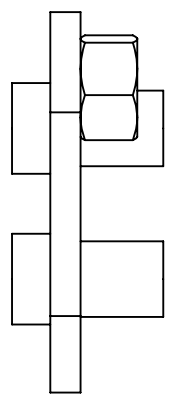
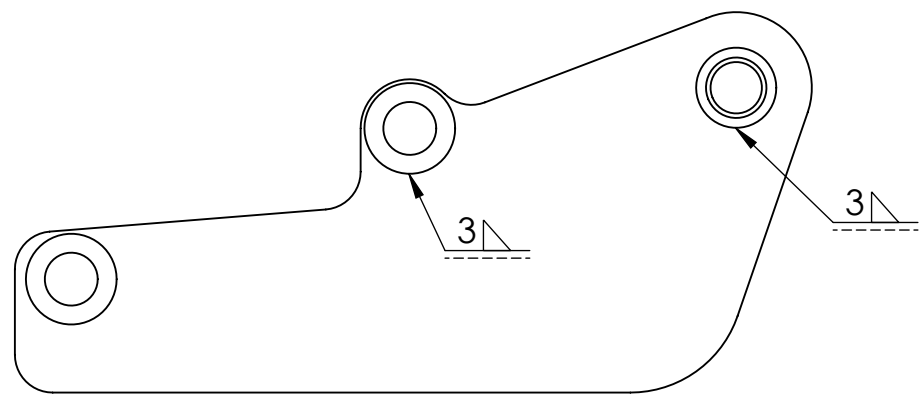
C

B

B

A

A



USE 2x BRAC2-2
for assembly

UNLESS OTHERWISE SPECIFIED: DIMENSIONS ARE IN MILLIMETERS SURFACE FINISH: TOLERANCES: LINEAR: ANGULAR:			FINISH: Black powder coat		DEBURR AND BREAK SHARP EDGES	DO NOT SCALE DRAWING		REVISION		1.0		
						©Moto-Abruzzo 2015						
						TITLE: Right hand bracket (3) for ETV1000 -complete						
						MATERIAL: Mild steel				DWG NO. BRAC3COMP		A4
						WEIGHT:		SCALE:1:1			SHEET 9 OF 12	

6 5 4 3 2 1

6 5 4 3 2 1

D

D

C

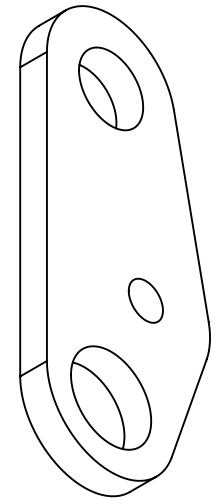
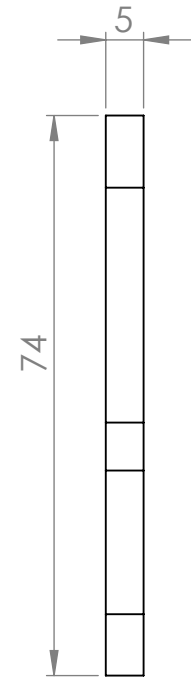
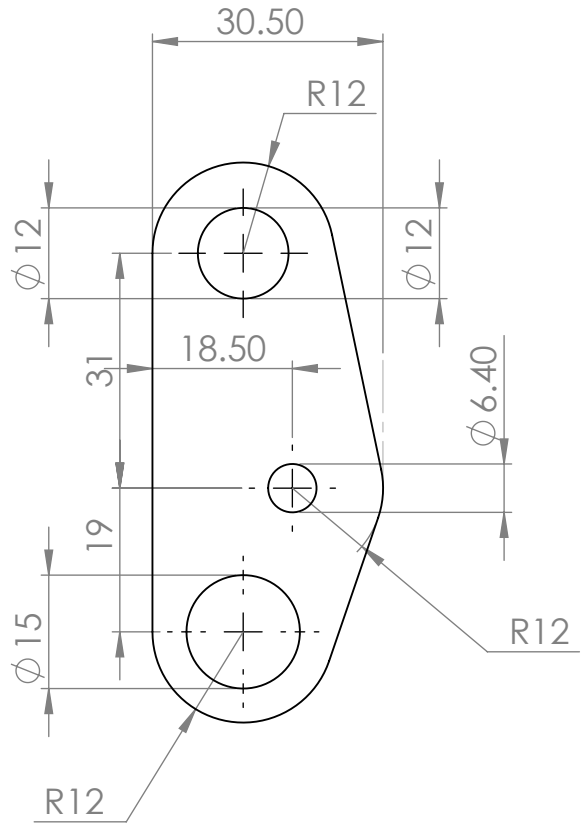
C

B

B

A

A



UNLESS OTHERWISE SPECIFIED: DIMENSIONS ARE IN MILLIMETERS SURFACE FINISH: TOLERANCES: LINEAR: ANGULAR:				FINISH: Black powder coat		DEBURR AND BREAK SHARP EDGES		DO NOT SCALE DRAWING		REVISION 1.0	
								©Moto-Abruzzo 2015			
								TITLE: Right Hand Bracket (4) for ETV1000 engine protection bars			
DRAWN Karl Bianchini				SIGNATURE		DATE 02/01/2015		MATERIAL: Mild steel		DWG NO. BRAC4-1	
CHK'D										A4	
APPVD											
MFG											
Q.A											
								WEIGHT:		SCALE:1:1	
										SHEET 10 OF 12	

6 5 4 3 2 1

6 5 4 3 2 1

D

C

B

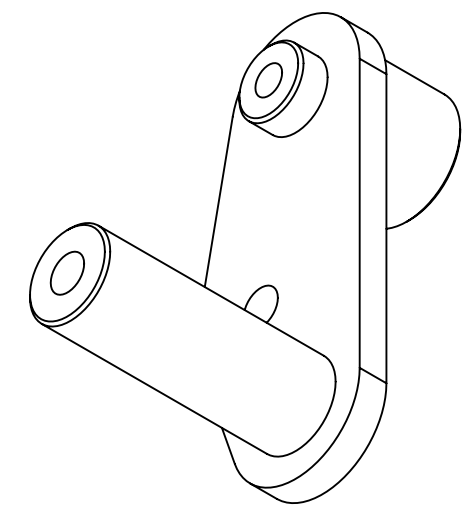
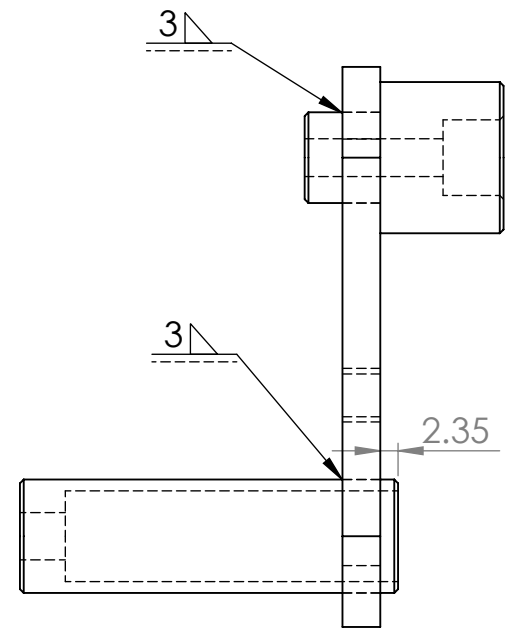
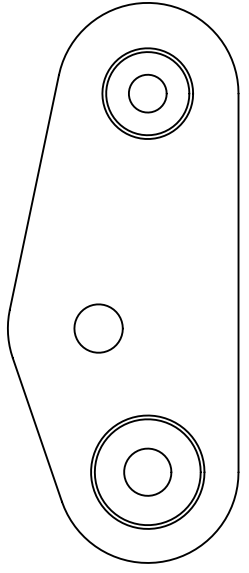
A

D

C

B

A



USE 1x BRAC1-2 &
1x BRAC1-3
for assembly

UNLESS OTHERWISE SPECIFIED: DIMENSIONS ARE IN MILLIMETERS SURFACE FINISH: TOLERANCES: LINEAR: ANGULAR:				FINISH: Black powder coat		DEBURR AND BREAK SHARP EDGES		DO NOT SCALE DRAWING		REVISION 1.0	
								©Moto-Abruzzo 2015			
								TITLE: Right hand bracket (4) for ETV1000 - complete			
DRAWN Karl Bianchini				SIGNATURE		DATE 02/01/2015					
CHK'D											
APPVD											
MFG											
Q.A								MATERIAL: Mild steel		DWG NO. BRAC4COMP	
								WEIGHT:		SCALE 1:1	
										SHEET 11 OF 12	

6 5 4 3 2 1

6 5 4 3 2 1

D

D

C

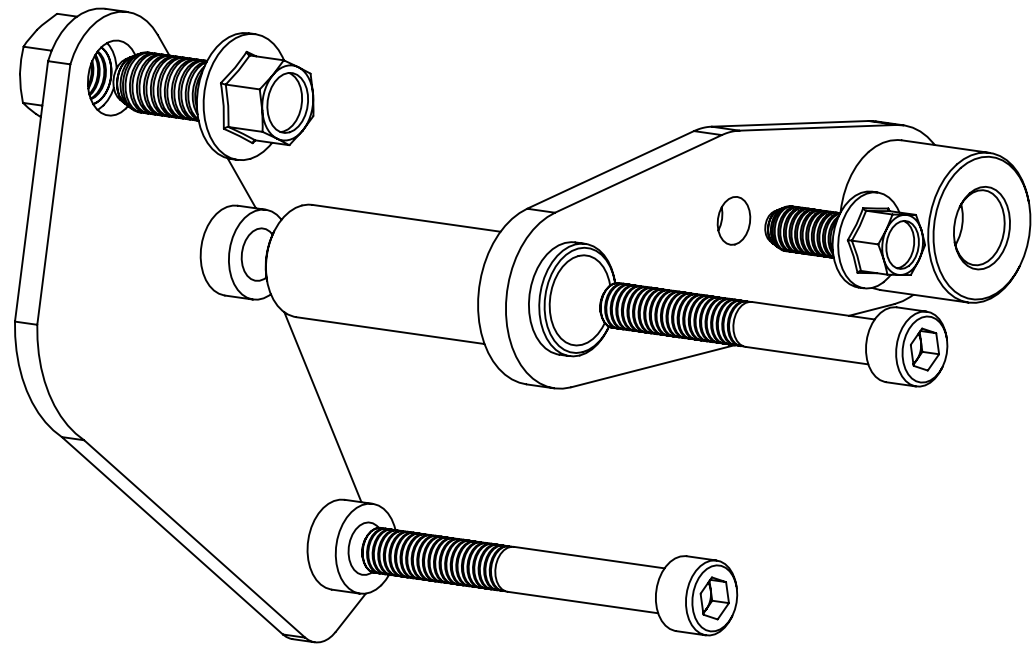
C

B

B

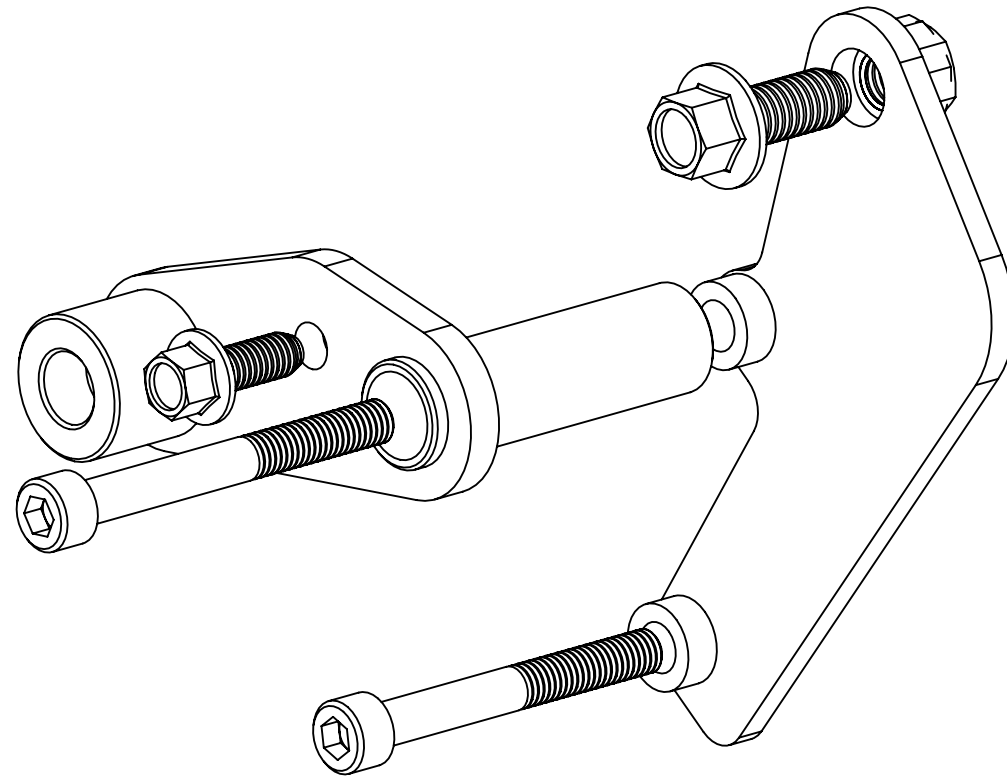
A

A



UNLESS OTHERWISE SPECIFIED: DIMENSIONS ARE IN MILLIMETERS SURFACE FINISH: TOLERANCES: LINEAR: ANGULAR:			FINISH: Black powder coat			DEBURR AND BREAK SHARP EDGES		DO NOT SCALE DRAWING		REVISION 1.0	
								©Moto-Abruzzo 2014			
								TITLE: Left hand engine protection bar mount for ETV1000 - complete			
								DWG NO.		A4	
						MATERIAL: Mild steel		SCALE 1:1		SHEET 1 of 2	
						WEIGHT:					

6 5 4 3 2 1



UNLESS OTHERWISE SPECIFIED: DIMENSIONS ARE IN MILLIMETERS SURFACE FINISH: TOLERANCES: LINEAR: ANGULAR:				FINISH: Black powder coat		DEBURR AND BREAK SHARP EDGES		DO NOT SCALE DRAWING		REVISION 1.0	
								©Moto-Abruzzo 2015			
								TITLE: Right hand engine protection bar mount for ETV1000 - complete			
				MATERIAL: Mild steel		DWG NO. BRACASSY2				A4	
				WEIGHT:		SCALE 1:1		SHEET 2 OF 2			
DRAWN	NAME	SIGNATURE	DATE								
CHK'D	Karl Bianchini		02/01/2015								
APPV'D											
MFG											
Q.A											

6 5 4 3 2 1

D

D

C

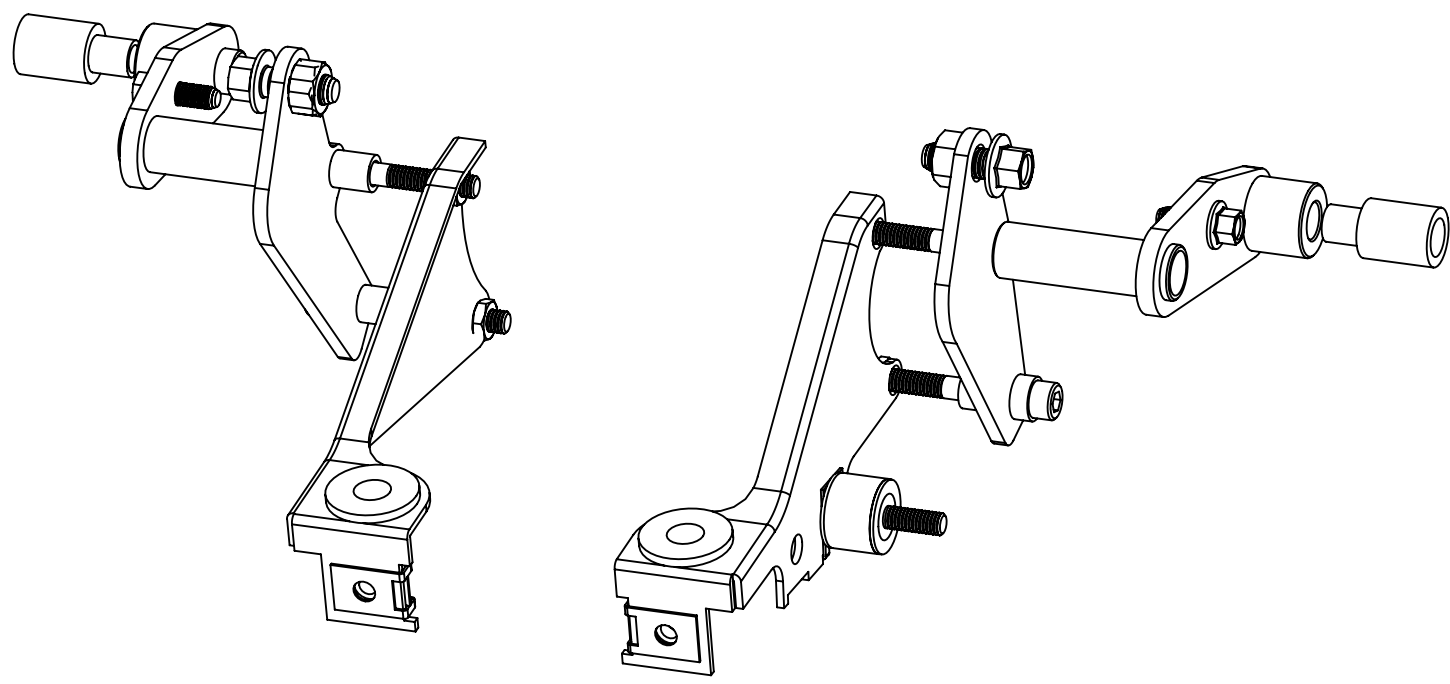
C

B

B

A

A



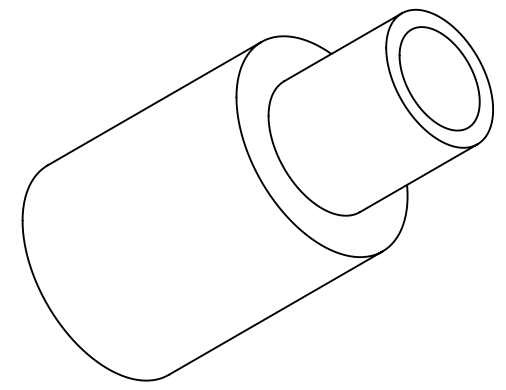
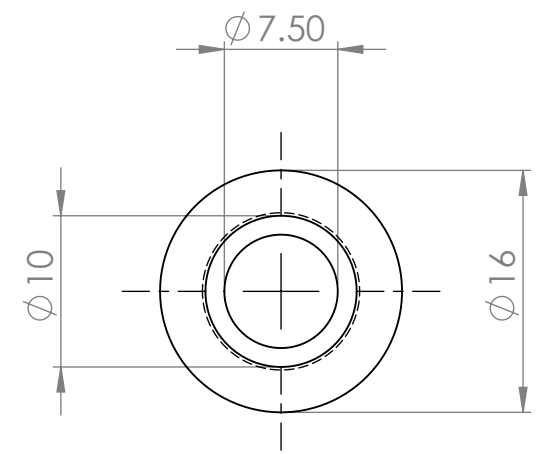
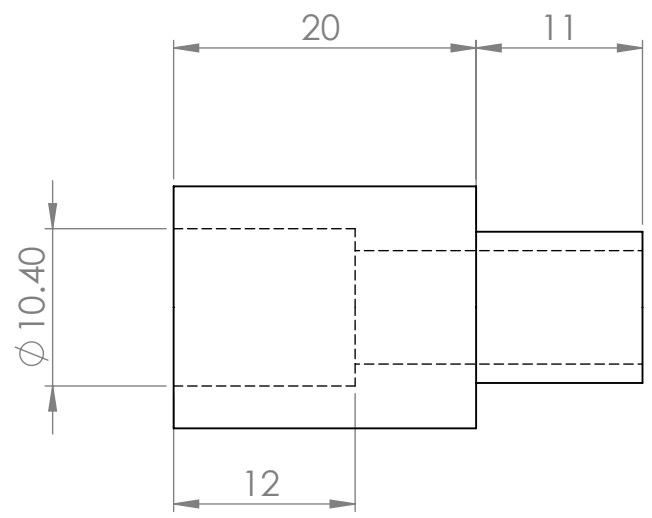
UNLESS OTHERWISE SPECIFIED: DIMENSIONS ARE IN MILLIMETERS SURFACE FINISH: TOLERANCES: LINEAR: ANGULAR:				FINISH: Black powder coat		DEBURR AND BREAK SHARP EDGES		DO NOT SCALE DRAWING		REVISION 1.0	
								©Moto-Abruzzo 2015			
								TITLE: Left and right hand engine/sump guard mounts in relation to radiator bottom mounts			
				MATERIAL: Mild steel		DWG NO. BRACALL-1		A4			
				WEIGHT:		SCALE 1:2		SHEET 1 OF 1			

6 5 4 3 2 1

6 5 4 3 2 1

D

D



C

C

B

B

A

A

UNLESS OTHERWISE SPECIFIED: DIMENSIONS ARE IN MILLIMETERS SURFACE FINISH: TOLERANCES: LINEAR: ANGULAR:			FINISH: Black powder coat		DEBURR AND BREAK SHARP EDGES		DO NOT SCALE DRAWING		REVISION 1.0			
							©moto-abruzzo 2015					
							TITLE: Engine protection bar rear spacer					
							MATERIAL: Mild steel		DWG NO. SPCR1			A4
							WEIGHT:		SCALE:2:1		SHEET 1 OF 1	
	NAME	SIGNATURE	DATE									
DRAWN	Karl Bianchini		02/01/2015									
CHK'D												
APPV'D												
MFG												
Q.A												

6 5 4 3 2 1

6 5 4 3 2 1

D

D

C

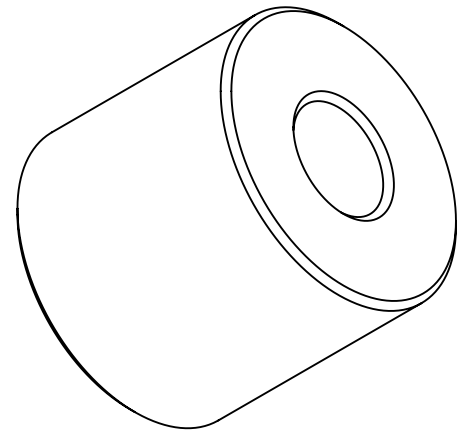
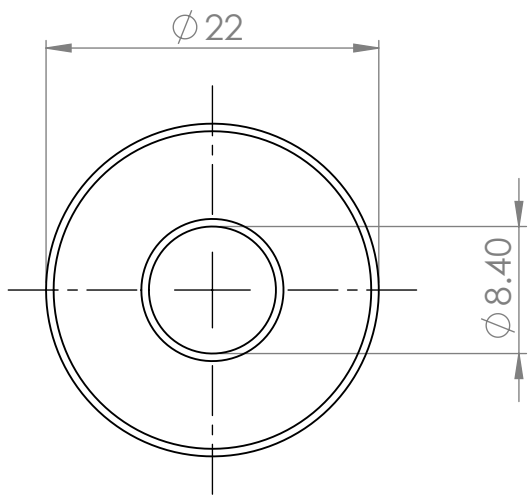
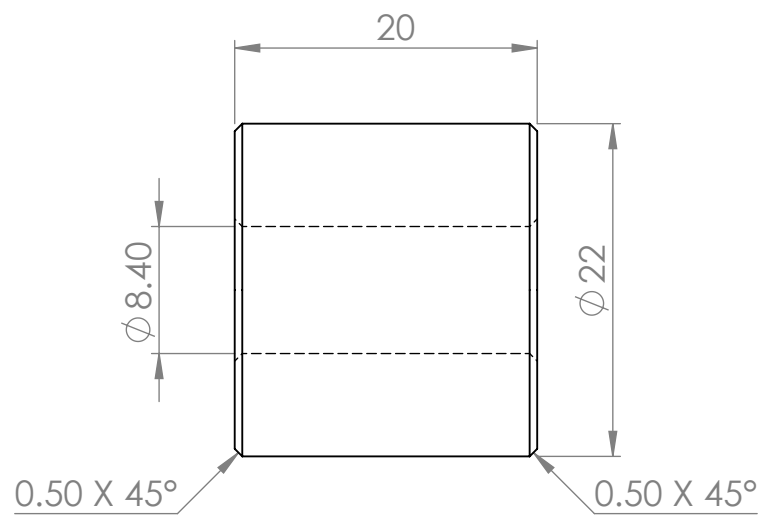
C

B

B

A

A



UNLESS OTHERWISE SPECIFIED: DIMENSIONS ARE IN MILLIMETERS SURFACE FINISH: TOLERANCES: LINEAR: ANGULAR:			FINISH: Black powder coat		DEBURR AND BREAK SHARP EDGES	DO NOT SCALE DRAWING		REVISION 1.0	
						©moto-abruzzo 2015			
						TITLE: Engine protection bar front spacer			
DRAWN Karl Bianchini			SIGNATURE		DATE 02/01/2015	DWG NO.		A4	
CHK'D						MATERIAL: Mild steel		SCALE:2:1	
APPVD						WEIGHT:		SHEET 1 OF 1	
MFG									
Q.A									

6 5 4 3 2 1

Mounting point photographs



Left hand mounting points

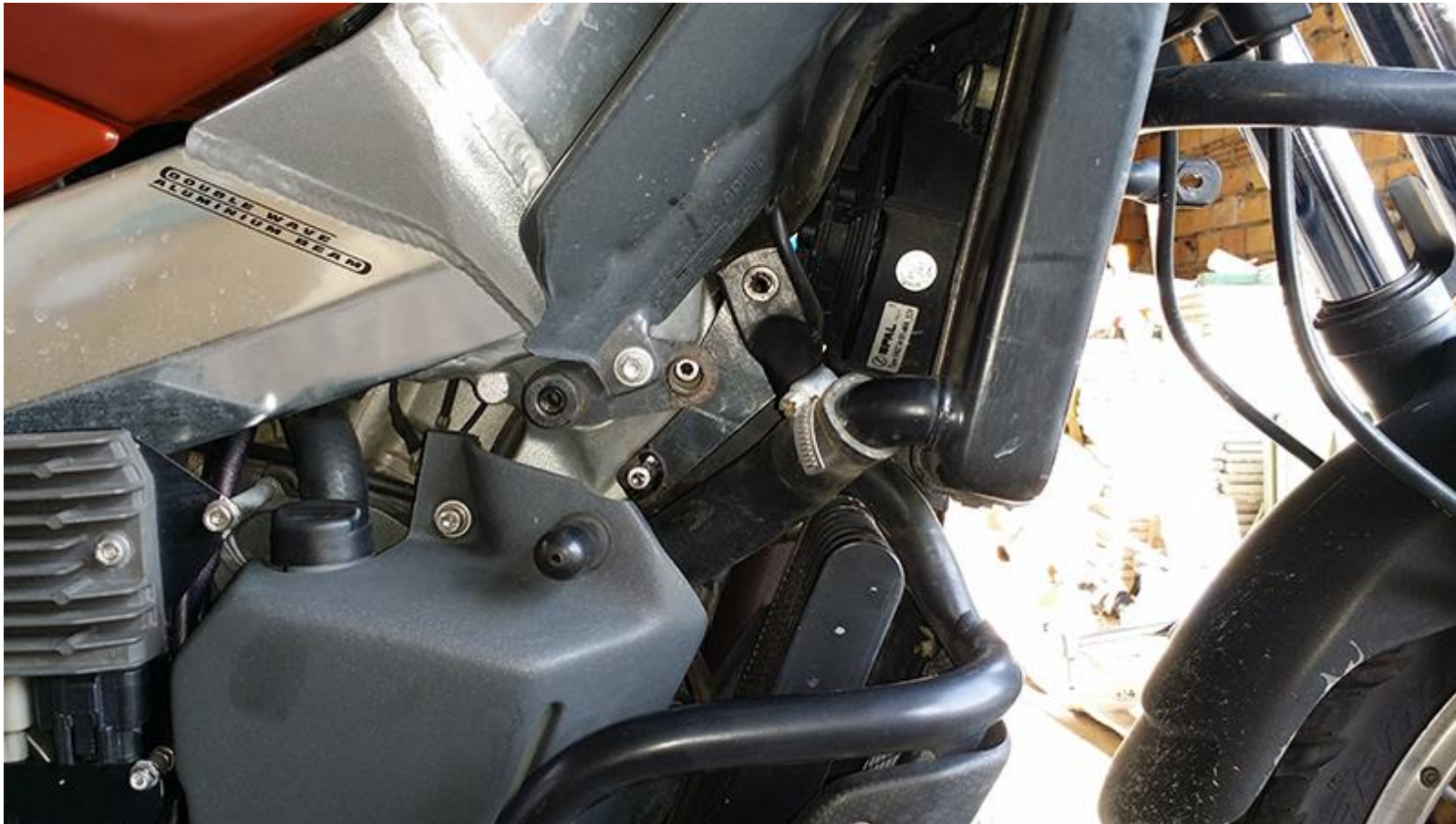


Brackets in place

If sump guard are not to be fitted, then omit BRAC1-1 and BRAC3-1 and replace with 2x 20mm spacers – 10mm outside diameter, 6.5mm internal diameter each side.



Right hand mounting points



Brackets in place

If sump guard are not to be fitted, then omit BRAC1-1 and BRAC3-1 and replace with 2x 20mm spacers – 10mm outside diameter, 6.5mm internal diameter each side.